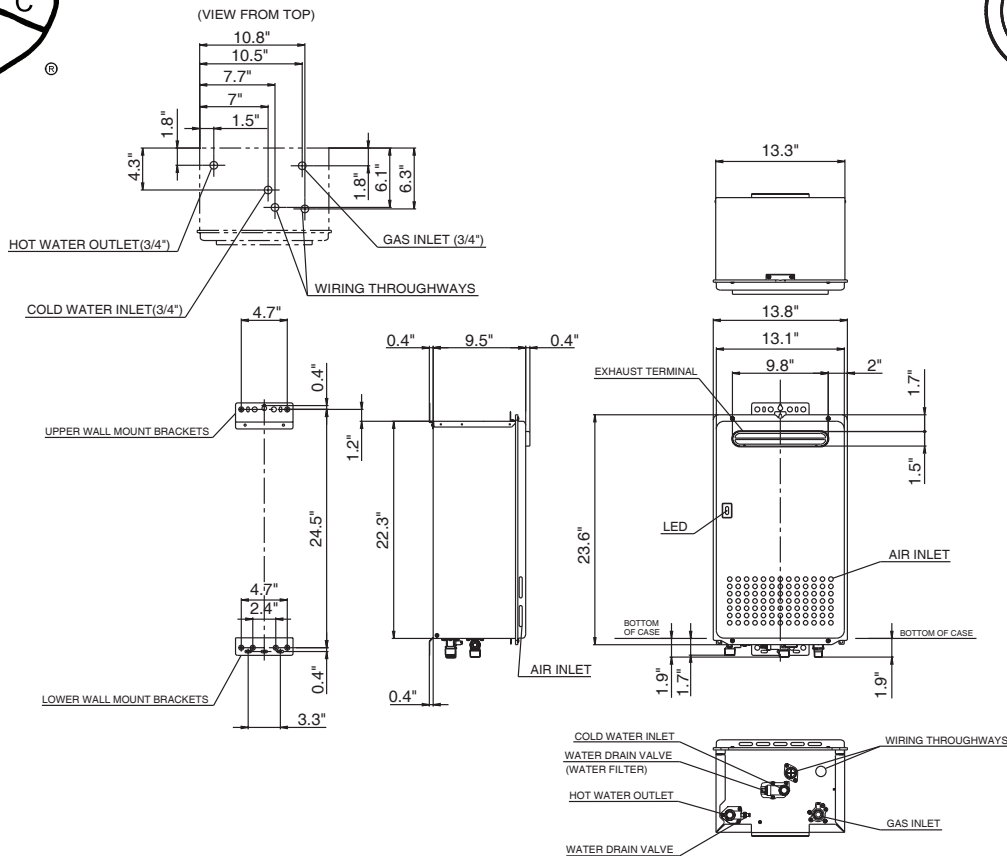


# Model N-069M-OD Product Specification Sheet



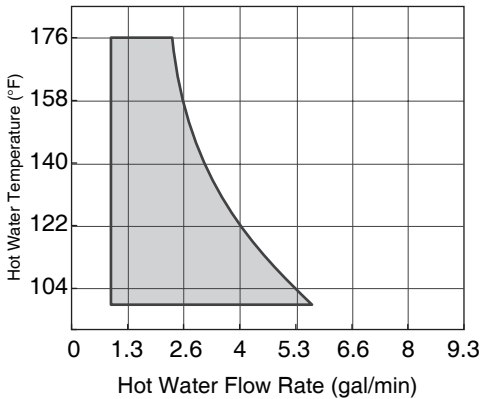
Item		Specification
Model Name		N-069M-OD
Type	Installation	Outdoor, Wall Hanging
	Air-supply/Exhaust	Power Vented
Ignition		Direct Ignition
Operating Water Pressure		15 - 150 PSI
Minimum Flow Rate		0.5 GPM
Gas Supply Pressure		NG : 4.0" - 10.5" LP : 8.0" - 14.0"
Dimensions		23.6"(Height) x 13.8"(Width) x 9.4"(Depth)
Weight		45 (pounds)
Water Holding Capacity		0.2 Gallon
Connection Sizes	Water Inlet	3/4"
	Hot Water Outlet	3/4"
	Gas Inlet	3/4"
Power	Supply	120VAC(60Hz)
	Consumption	NG: 66W LP: 66W Freeze Prevention 125W
Material	Casing	Zincified Steel Plate / Polyester Coating
	Flue Collar	Stainless Steel
	Heat Exchanger	Copper Sheeting, Copper Tubing
Safety Devices		Flame Rod, Thermal Fuse, Pressure Relief Valve, Lightning Protection Device (ZNR), Electric Leakage Prevention Device(GFCI), Overheat Prevention Device, Freezing Prevention Device, Fan Rotation Detector
Accessories		Remote Controller, Remote Controller Cord, Anchoring Screws

NORITZ AMERICA CORPORATION

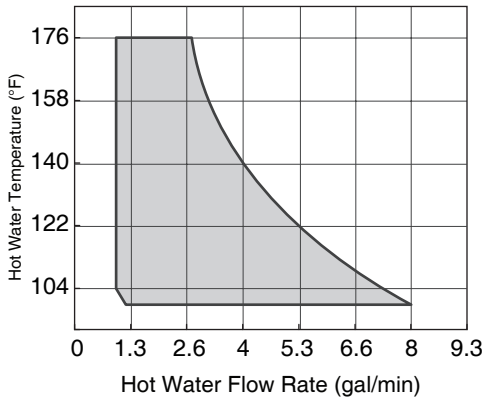
25172 Arctic Ocean Drive, Suite 102, Lake Forest, CA 92630 Tel. 1-866-7NORITZ www.noritzamerica.com

# Model N-069M-OD Product Performance

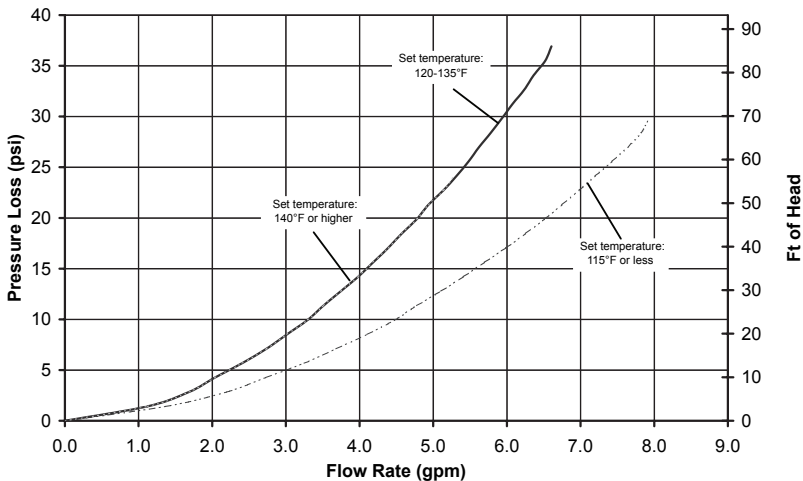
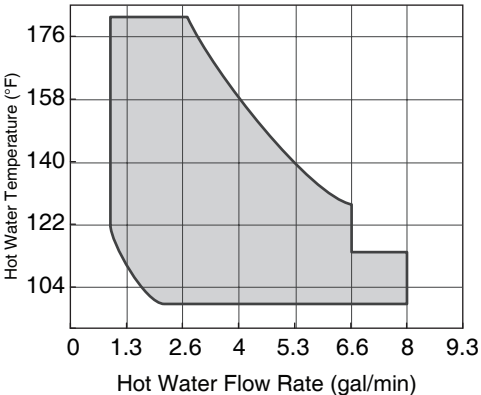
[Winter] Water temperature: 46°F



[Spring/Fall] Water temperature: 64°F



[Summer] Water temperature: 82°F



Item		Maximum Performance	Minimum Performance
Gas	NG	190,000 btuh	25,000 btuh
Consumption	LP	190,000 btuh	25,000 btuh
Hot Water Capacity	45°F Rise	6.9 Gal/min.	
	77°F Rise	4.0 Gal/min.	
	100°F Rise	3.1 Gal/min.	
Capacity Range		0.5 - 7.9 Gal/min.	
Temperature Settings		100-150°F (In 5°F intervals) ,160, 170, 176°F (14 Options)	
Default Temperature Options		120, 130, 140, 176°F (Original is 120°F)	

Architect/Engineer \_\_\_\_\_

Customer/Job Name \_\_\_\_\_

Address \_\_\_\_\_

Contractor \_\_\_\_\_

Date \_\_\_\_\_ Phone \_\_\_\_\_